



SAFARI SPECIALISTS



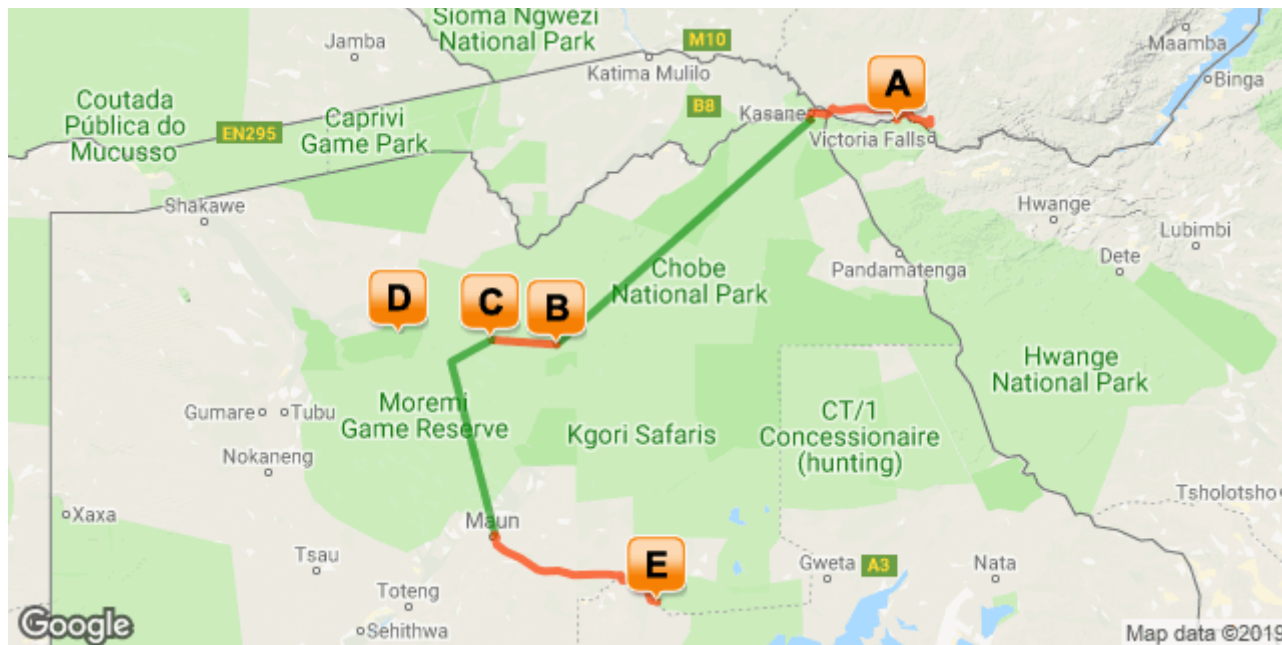
BOTSWANA IS OUR HOME SAFARIS ARE OUR PASSION

9nts Walk on the Wildside_Mid-Range_2020

Livingstone (Victoria Falls) - Khwai Private Reserve - Okavango Delta - Makgadikgadi Pans National Park

10 Days / 9 Nights

Starts Livingstone / Ends Maun



[Click here to view your Digital Itinerary](#)

Introduction

Start	Accommodation	Destination	Basis	Duration
Day 1	Waterberry Zambezi Lodge	Livingstone (Victoria Falls)	FI	2 Nights
Day 3	Hyena Pan Tented Camp	Khwai Private Reserve	FI	1 Night
Day 4	Sky Beds*	Khwai Private Reserve	FI	1 Night
Day 5	Footsteps Across the Delta	Okavango Delta	FI	3 Nights
Day 8	Meno a Kwena Tented Camp	Makgadikgadi Pans National Park	FI	2 Nights

Key

FI: Fully Inclusive

Transport

Transfers

Date	Company	Details
Day 1	Waterberry Zambezi Lodge	Harry Mwanga Nkumbula International Airport [LVI] - Waterberry Zambezi Lodge
Day 3	Waterberry Zambezi Lodge	Waterberry Zambezi Lodge - Kasane Airport [BBK]
Day 7	Meno A Kwena	Maun Airport - Meno A Kwena
Day 9	Meno A Kwena	Meno A Kwena - Maun Airport

Flight Information

Date	Flight	Details
Day 3	Mack Air	Kasane Airport [BBK] - Banoka Airstrip
Day 5	Safari Air	Banoka Airstrip - Shinde Airstrip
Day 7	Safari Air	Shinde Airstrip - Maun Airport [MUB]

Cost of the safari 2020

Season	Cost per person sharing	Single Supplement	Average nightly rate per person
01 March - 31 March 2020 **	US \$5300	US \$0	US \$590 per person per night sharing
01 April - 31 May 2020	US \$6040	US \$1120	US \$670 per person per night sharing
01 June - 30 June 2020	US \$6550	US \$1360*	US \$730 per person per night sharing
01 July - 31 August 2020	US \$7370	US \$2180*	US \$820 per person per night sharing
01 September - 31 October 2020	US \$7030	US \$2010*	US \$780 per person per night sharing
1 November - 30 November 2020 **	US \$6040	US \$830	US \$670 per person per night sharing

Special notes

- Footsteps Across the Delta walking camp is closed December, January and February, please contact us for alternative options for the Okavango Delta in the green season.
- We have included 1 night Hyena Pan/1 night Sky Bed from 1st April – 31st October only, subject to availability and conditions at the time of travel, it will be substituted for 2 nights Hyena Pan for all other travel dates ** March and November
- Please note that the single supplement* is very high due to the minimum 2 guest requirement on the Sky Beds, so for a better value rate we would suggest you spend 2 nights at Hyena Pan OR if you are travelling with other guests, we will try to negotiate a better rate (ie single but not solo traveller).
- Additionally the single supplement is for accommodation only, applicable when travelling with more than 2 guests and excludes a flying surcharge for guests travelling solo – rate available on request
- To go a step more adventurous, Meno A Kwena can offer a Makgadikgadi Pans sleep out in the dry months from approx. July – October on a minimum 3 night stay. Please discuss with your consultant, if you would like to look into adding an additional night.
- Please note that where a booking crosses over 2 different rate periods e.g. Oct & Nov, neither rate is applicable – please request a special quote
- The above rate is subject to change due to major currency fluctuations, fuel surcharges and increases in national park fees (see below)

- Subject to availability at the time of booking

Family Friendly

The minimum age is 16 years unless sole use of camp is booked at Footsteps Across the Delta under the Young Explorers package which will change the pricing.

Individual camp policies:

Waterberry Lodge accepts children of all ages, discounts applicable and different family rooms.

Footsteps Across the Delta – minimum age 16 yrs, however sole use of camp on the Young Explorers programme takes children as young as 7 yrs, and has 1 family tent.

Hyena Pan welcomes children 6 yrs and over, with discounts applicable, however private vehicle is compulsory for children 12 years and younger.

Sky Beds accept children 12 years and over and discounts for those 12-18 years, sharing with an adults is required, Meno A Kwena has family rooms and welcomes children of all ages with discounts applicable, however private vehicles must be booked for families with children 12 yrs and younger.

Park Fees and Departure Taxes and Tourism Levy

Please be aware that Park Fees, Conservation Levies, VAT, Airport Taxes and Government Levies may increase in 2020. Regrettably such increases are beyond our control and are excluded from any bookings, provisional or confirmed. We will inform you should any increase be advised.



Travel for Impact – Responsible Travel

By booking this itinerary, you donate USD\$2 for every night of travel per person on the booking. Your donation goes to Travel for Impact (TFI) and ensures that your safari has a meaningful impact on the people who live locally. For more information on giving back to your chosen destination of travel, visit www.travelforimpact.com



Feed a Child Botswana

Safari Specialists contribute USD\$5 per person per booking to Feed A Child Botswana. This contribution goes directly towards the purchase of Nutri-meal, a fortified cereal provided to undernourished children in our local community in Maun.



Okavango Air Rescue

Please note that we include Okavango Air Rescue patronage. They provide paramedic or Doctor assisted helicopter medical evacuation as required, in conjunction with your travel insurance. Please discuss further details with your consultant and visit www.okavangorescue.com

Day 1-3: Waterberry Zambezi Lodge, Livingstone (Victoria Falls)

On arrival at Livingstone Airport you are met by a Waterberry Lodge representative who will assist with your road transfer to the lodge. Here, you spend two nights on a fully inclusive basis.

Selected activities are included (see below description) however there are further activities to be enjoyed in the Victoria Falls area and it is best to discuss your activity preferences prior to travel in order that Waterberry Lodge can arrange your days to make best use of your time.



LIVINGSTONE (VICTORIA FALLS)

At Victoria Falls, the earth splits open and swallows one of Africa's greatest rivers, the mighty Zambezi, creating the largest sheet of falling water on earth. As the water hits the narrow depths of the Batoka Gorge beneath, it blasts a cloud of mist skywards, lending the falls their local name 'mosi-oa-tunya' (the smoke that thunders). When the Zambezi is at its fullest, the mist hangs a permanent raincloud above the falls, showering visitors on even the sunniest of days and visible for miles around.

Above the falls on the upper Zambezi, boats cruise the tranquil water at sunset while the distant spray catches the fading light downstream. Below the falls, the Batoka Gorge's rocky walls funnel the lower Zambezi into a chain of world-class rapids, prime for white water rafting.

Aside from being a UNESCO world heritage site and a natural world wonder, Victoria Falls also forms a natural border between Zimbabwe and Zambia. The falls can be seen from both countries, and for the most part the same activities are offered on both sides, from helicopter scenic flights to village visits and souvenir shopping.

Whether your idea of getting away from it all is a relaxed high tea in colonial grandeur or a heart-stopping bungee jump off a bridge, Victoria Falls keeps both the faint of heart and the most insatiable of adrenalin junkies busy for days.

From Zambia, a side on view of the falls is on offer with views into the Batoka Gorge, as well as the possibility of perching yourself at the edge of the falls on the vertigo-inducing Livingstone Island.

From Zimbabwe, you'll get a full-frontal view of three quarters of the falls' 1.7km wide curtain of water from viewpoints and footpaths meandering through a rainforest kept hot and humid by the spray of the falls.

Overnight: Waterberry Zambezi Lodge [View iBrochure](#)

Includes: meals, local drinks, 2 in-house activities per day and laundry

Excludes: all park fees and premium drinks

In-House Activities: tour of the Victoria Falls, river cruises, fishing, island picnics, guided birding, guided village walk, guided tour of town and local markets

Waterberry Lodge is situated on the banks of the Zambezi River about 22 km from Livingstone, towards Kazungula.

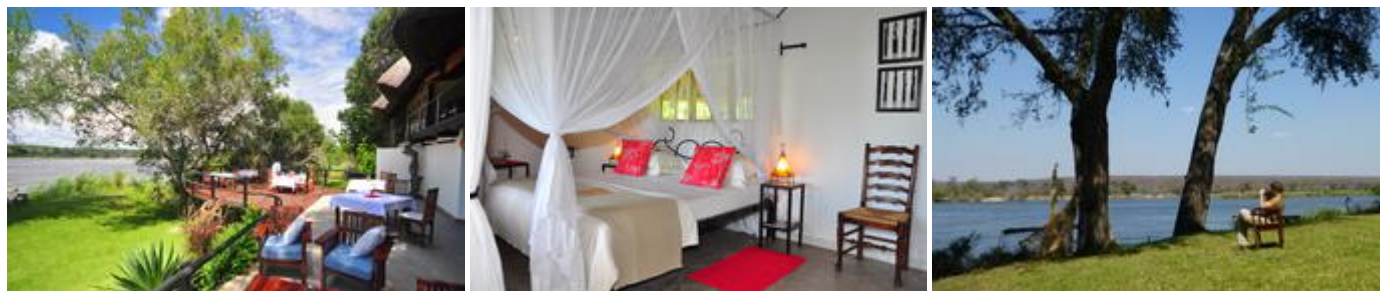
The main double-storey lodge area overlooks the Zambezi River and the game park beyond. Upstairs the main lounge is open to the high thatch with plenty of seating and boasts a well-stocked bar with magnificent views. Meals are served in the dining area or alfresco on the sun terrace that overlooks the river.

A floating pontoon gently sways on the Zambezi River, making it the perfect location for sundowners, fishing or just relaxing and enjoying the view. A large and welcoming swimming pool is set in the centre of our landscaped gardens and has a small plunge pool with a shallow end, making it safe for children. The comfortable chalets are set in sweeping lawns - some on the riverbank and some overlooking a private dam. Several of the rooms have their own private decks for sunbathing, bird watching, private dinners or just relaxing.

In-house activities include a tour of falls, sunset cruise, daytime cruise, fishing, island picnics, guided birding, guided village walk and guided tour of the town and local markets – depending on the rate basis these are

included or excluded. All other activities offered in Livingstone can be organised at an additional cost and pre-booked or booked at the lodge on arrival.

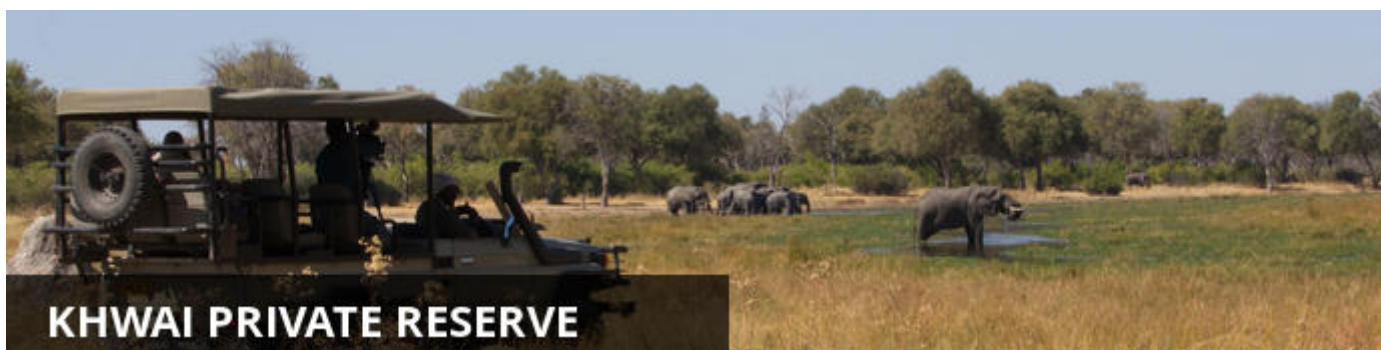
Airport transfer time: 35 minutes



Day 3: Hyena Pan Tented Camp, Khwai Private Reserve

Following breakfast and a morning at leisure, you will be transferred across the Kazungula border into Botswana to Kasane Airport. A Mack Air representative will meet you on arrival to assist with check-in for your light aircraft transfer to Banoka Airstrip. Your guide will meet you on arrival to assist with your road transfer to Hyena Pan Tented Camp. Here, you spend two nights on a fully inclusive basis.

Please note that the flight is booked on a 'seat rate' basis and therefore flight times are not scheduled until the day prior to flying, lodge managers will arrange your activities and transfers accordingly. Please note that there is a strict luggage restriction on all light aircraft flights of 15kg per person in soft bags, plus 5kg hand luggage and there may be up to 3 stops en-route.



The Khwai Private Reserve is a private concession north of the Khwai River, west of the Chobe NP, east of the private Delta concessions and south of the Selinda. The massive Khwai Private reserve is a joint venture partnership with the local community and offers luxury safaris with all the perks of being a private concession such as night drives, off-roading and walking. The huge concession is relatively empty with only a handful of lodges operating within its boundaries. Its size ensures a large diversity of habitats and ecosystems ranging from riverine forests to large mopane woodland, open savannah and seasonally inundated floodplains. Also due to its size game is not as concentrated as the Khwai Community area but rather spread out among the different habitats. The area is known for its large herds of rare sable and roan antelope, lechwe, multiple other species of plains game as well as the always accompanying predators such as lion, leopard and wild dog.

Overnight: Hyena Pan Tented Camp [View iBrochure](#)

Includes: meals, local drinks, activities and laundry

Excludes: premium drinks and park fees for Moremi game reserve daytrips

Activities: game drives and bushwalks

Hyena Pan is a tranquil tented camp in private concession area NG18 better known as Khwai. The concession area borders the Moremi National Park and the Khwai River in the South and the Chobe National Park to the East. The camp is positioned 12kms north of the Khwai river under cathedral mopane forest, overlooking a natural pan.

Accommodation consists of eight en-suite tents, furnished with twin beds, solar generated power and gas heated showers. There is an international charging station within each tent for cameras and batteries. Guests have the option of a sleep out on the "sky beds" – these are raised decks for sleep outs under the stars (pre-booking required, and no tents reserved for the night)

The camp's main area consists of two lounges and a dining area where meals are served. Guests can relax by the small swimming pool while watching animals drink at the waterhole.

Activities on offer include day and night drives within the private concession, as well as game walks (walking to be booked in advance). Full day trips with packed lunches into the Moremi Game Reserves can also be organised if booked in advance. (minimum of 4 guests)

Airstrip Transfer Time: 60 minutes from Khwai or Banoka airstrips.



Day 4: Sky Beds, Khwai Private Reserve (1st April – 31st October only), otherwise 2 nights at Hyena Pan Tented Camp will be offered

Overnight: Sky Beds [View iBrochure](#)

Includes: meals, local drinks and activities

Excludes: premium drinks, park fees and laundry

Activities: game drives and bush walks

Sky beds is a unique outdoor adventure venue in a prime setting within the Khwai Private Reserve Concession, bordering the Khwai River, Moremi Game Reserve and Chobe National Park. A waterhole 70m away from Sky beds attracts a large variety of wildlife.

The open air accommodation consists of four wooden platforms set five meters high above the ground. The top deck of each structure is the bedroom, surrounded by mosquito netting only, completely open otherwise. The level beneath the bedroom is the shower, loo and changing area, suitably enclosed by wooden walls for privacy.

On the ground level, refreshments and meals are served al fresco, lit up at night by the central campfire and star filled skies. During the rainy season, which generally runs from November to April, Skybeds guests will be accommodated at Hyena Pan Camp should weather conditions be unfavourable for the sleep out experience.

The Khwai region holds particularly good game and bird populations, and game drives and bush walks are offered within the private concession.

Airstrip transfer time: 1h30 minutes

Skybeds to Sable Alley transfer time: 1h30 minutes

Skybeds to Hyena Pan transfer time: 15 minutes



Day 5-8: Footsteps Across the Delta, Okavango Delta

Following breakfast and a morning activity (flight time permitting), you will be transferred to the airstrip in time for your light aircraft transfer to Shinde Airstrip. Your guide will meet you on arrival and you will be transferred to Footsteps Camp. Here, you will stay for three nights on a fully inclusive basis.



The Okavango Delta is where the wild things are: an immense, waterlogged oasis alive with elephants and birdlife, adrift in the middle of Kalahari sands. The real magic of the Delta lies in its water, trickling through from far away highlands, and spreading across the channels and floodplains.

During winter in the Kalahari, when the sun has baked the earth bare and turned the desert its driest, water fills the Okavango; transforming the floodplains into a Noah's Ark of African wildlife.

As the water brings life to the delta, its local residents shape and recreate it. Termites slowly build mounds into islands, germinated with palm trees by passing elephants. Waterways open and close on the whim of wide-bottomed hippos, carving out channels where they crash through reeds, and leaving room behind them for exploration by mokoro.

The Okavango has many faces, which change throughout the year, prompted by that most unpredictable diva of all: the weather. Water levels rise and drop, expanding and shrinking islands, while animals move where the life is easiest and the grass greenest. In a few days, a sandy road driven by vehicle can become a waterway of unknowable depth, prompting a safari by boat instead.

Where and when you stay in the Okavango Delta will hugely influence what you do in the bush each day, the animals you're most likely to see and finally, the safari experience you'll have.

The delta's watery heart is best discovered by mokoro through shallow channels and floodplains, as well as crossing the islands on foot. For less water and more of the big game, visit a camp on its drier edges (including Moremi Game Reserve and the Khwai Community Area), jump on a vehicle and seek out the animals hiding in the woodlands.

Overnight: Footsteps Across the Delta [View iBrochure](#)

Includes: meals, local drinks, activities, park fees & laundry

Excludes: premium drinks

Activities: walking, fishing (seasonal) & mokoro excursions (seasonal and water level dependent)

Footsteps across the Delta is situated in the Shinde Concession, one of the most diverse regions of the Okavango Delta, offering a variety of habitats: riverine forests, palm islands, permanent swamps and dry veld. The camp is true to the original 'under canvas African safari', essentially an exclusive camp that offers a specialised walking experience.

This rustic bush camp offers accommodation in three simply furnished meru style tents, each with an open-air bush shower and an adjoining bush toilet. The main dining area is under canvas with evenings spent relaxing around the campfire sharing stories of the day. There is a small viewing platform and for those needing a little pampering with a difference, a bush bath.

The Footsteps experience focuses on walking in the delta led by a highly specialised armed guide, suitable for those looking for a little more than your average safari (the minimum age is sixteen years old). The emphasis is on exploration and discovery, each morning tracking fresh spoor to reveal the night's events. Other activity options at the camp include fishing and mokoro excursions and possibly game drives, depending on water levels and the preference of the guests in camp.

Footsteps Camp is also the base camp of the highly successful Young Explorers, where families book out exclusive use of the camp and a specialised guide runs a family oriented safari programme.

Airstrip Transfer Time: 1.5 hours - 2.5 hours



Day 8-10: Meno a Kwena Tented Camp, Makgadikgadi Pans National Park

Following breakfast and a morning activity (flight time permitting), you will be transferred to Maun Airport. A Meno A Kwena Tented Camp representative will meet you on arrival to assist with your road transfer to the camp. Here, you will spend two nights on a fully inclusive basis. There is an option of an overnight pans sleep out in the dry season months only (approximately July – October, conditions permitting). Please discuss with your consultant.



The Makgadikgadi National Park is where the Okavango Delta finally fades into desert. The Boteti River draws a line in the sand, separating the dry Makgadikgadi from the thirst lands of the Kalahari beyond. This is the ultimate last chance for hundreds of zebras and wildebeest that crowd the water's edge to quench a desert-drawn thirst.

The Boteti is the last finger of the Okavango Delta, reaching down to the Makgadikgadi Salt Pans. Years have passed without the river being fed a drop at all; becoming a long sandy riverbed with shrinking waterholes, where zebras jostle for space under high-flying sheets of dust. At other times, the Boteti swells up fat and full, spilling into salt pans hundreds of kilometres from its source before evaporating into thin air.

This is the place to watch plains game crashing through sharp acacia trees, gathering under lofty palms and lurking in the shade of the riverine woodland, keeping close to the water. When the Boteti River is full, big elephant bulls can often be found playing in the water and browsing in the reeds while the sun sets on the day.

Although the park's eastern edges touch the Makgadikgadi salt pans, it is unlikely you'll see them during your stay. Where the salt pans are about landscapes, the Boteti is about a more traditional safari experience. Explore the banks by game drive, drift along the river by boat (when water levels allow), or wait for the wildlife to pass by from the sanctuary of a hide.

Once the rains arrive (October – November) the zebras and wildebeest abandon the Boteti, migrating to the salt pans and only returning in the winter (April – May). During the green season the Boteti's banks become a quiet green landscape of technicolour sunsets and an explosion of birdlife.

Overnight: Meno a Kwena Tented Camp [View iBrochure](#)

Includes: meals, local drinks, activities, park fees & laundry

Excludes: premium drinks

Activities: game drives, bushmen cultural walks, boating (short cruises along the Boteti – water levels permitting) and game viewing from the floating hide.

Special Activities Available During a Minimum 3 Night Stay (Pre-booking required): Pans sleep outs (July to October weather permitting)

Meno A Kwena, meaning “teeth of the crocodile”, borders Makgadikgadi Pans National Park in close proximity to Nxai Pan National Park. The camp is situated on tribal land and has been built on a cliff edge overlooking the Boteti River.

This authentic safari camp is styled in the tradition of an East African tented camp. Meno A Kwena offers ten safari tents. The tents are simple yet stylishly furnished with comfortable bedding, a fan as well as gauze sliding doors and windows. Each tent has an en suite bathroom with a shower and a flush toilet. Each tent features a private sitting area with views over the Boteti River.

The main lodge has a dining area, bar and lounge with small library and features many interesting artefacts and photographs. Two covered seating areas at the edge of the escarpment provide guests with breathtaking views over the Boteti River. The river attracts many zebra and wildebeest herds during the dry season (June to Oct) offering excellent game viewing from the comfort of the camp. There is a small plunge pool, as well as a floating game viewing hide offering a close yet safe view across the river into the national park.

Activities at Meno A Kwena include guided nature walks with Bushmen (San), game drives into the Makgadikgadi National Park and game viewing from the floating hide on the Boteti River. For stays of 3 nights or longer, seasonal (July to October) overnight camping excursions to the salt pans are also available on request. Please note these activities must be pre-booked in advance and can't be arranged on arrival in camp.

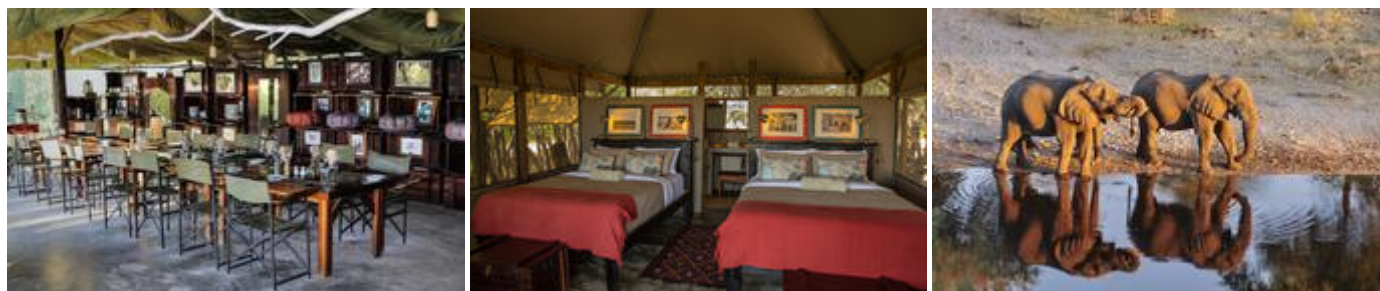
Meno A Kwena's informal atmosphere makes for a very relaxing stay after the hectic round of activities at many camps. Please note that due to the scheduled road transfer times, Meno A Kwena don't offer an activity

on the afternoon of arrival. Guests are encouraged to take advantage of their unique location, relax and enjoy seasonal game viewing from the comfort of their own room or the hide.

PLEASE NOTE: Transfers leave Maun Airport at 14:00 and leave camp to arrive at Maun Airport at 10:00. Any guests arriving or departing outside these times, will need to pay an additional charge per transfer for the additional vehicle and guide.

Pan sleep outs requires minimum of 2 and maximum of 4 guests.

Road Transfer Time from Maun: 2 hours



Day 10: End of Itinerary

Following breakfast and a morning activity (flight time permitting), you will be transferred by road to Maun Airport. A Safari Specialists representative will meet you on arrival at the airport to assist with your onward travel.

Travel Information

- Please take note of our Booking Terms & Conditions. It will be understood that these have been read and accepted by you on receipt of confirmation of the booking.
- For your safety and peace of mind, on confirmation of your booking, we strongly recommend that Travel Insurance is arranged to cover cancellation, curtailment, emergency evacuation, medical and repatriation expenses, damage/theft/loss of personal luggage, money and goods.
- Road and air transfers and activities are quoted on a seat basis (shared) unless otherwise requested or specified. Passengers may have various stops en-route to a destination. The transfer or charter company reserves the right to specify departure and arrival times. Private charters can be requested at an additional cost.
- Passengers weighing over 100kg should please advise us at the time of booking, as we may need to cost in an additional seat on internal flights for your safety and comfort.
- The costs are subject to change at any time due to fluctuations in fuel costs, taxes, levies, government regulations, rate of exchange and factors that are imposed upon us by our suppliers that are beyond our control.
- Please advise us of the ages of children (under 18) travelling, together with their date of birth, at the time of booking as not all lodges accept children and there may be restrictions or conditions which can affect pricing.
- We recommend that optional activities be booked in advance at time of confirmation to guarantee availability e.g. Helicopter Flight of the Angels in Victoria Falls
- Please allow a minimum 2-3 hours connection time in Johannesburg for international flights. It is important that you check that your flight tickets have been issued in your full names as per your passport.
- We require full payment for international and domestic scheduled flights at the time of confirmation e.g. Air Botswana Johannesburg to Maun, Proflight Livingstone - Lusaka and so on. We are not able to guarantee any flights before receipt of payment as seats are often held for a limited period before ticketing is required so

this is a time sensitive issue. Air tickets are considered non-refundable unless otherwise specified. Please confirm the details with your consultant at the time of booking.

Passports, Visas and Travel Documentation

Your passport must have at least 6 months validity before the expiry date and 6 empty pages (not including the endorsement pages). The onus is upon guests to ensure that passports and visas are valid for the countries visited. Please note that certain visas can take up to 3 months to be processed so please consider this when booking.

If you are travelling with children through Southern Africa please be aware that you will be required to have certified copies of their unabridged birth certificates, and passports on hand. If you are not their legal parents, or if only one of you is travelling – you will need to have consent in the form of an affidavit giving you permission to travel with the child.

Inter-camp transfers

Due to the vast distances involved in travelling in the remote areas of Southern Africa - your itinerary may include road, boat and air transfers in small aircraft.

On shared air transfers, all the flight times between lodges are arranged a few days before the flights take place to avoid endless schedule changes. The lodge or camp where you are staying will be advised of your departure time the day before travel and will ensure that you are at the airstrip on time. Although every effort will be made to ensure that guests are transferred together in one vehicle / aircraft, this cannot be guaranteed, especially with larger groups. The aircraft used for inter-camp transfers vary in size from 3, 5, 7 and 12 seater aircraft. We recommend that guests susceptible to motion sickness take appropriate precautions due to flying conditions.

Weight & Luggage Restrictions

There are strict luggage restrictions in place on any itinerary, which includes light aircraft transfers for safety reasons. Luggage, including camera equipment and hand luggage, is restricted to 20 kg per person travelling on seat rates. Only soft bags will be accepted - no hard suitcases or bags with wheels can be transported, as they physically cannot fit into the aircraft.

The maximum dimensions of the soft bags that can be accommodated are as follows: 25cm/10 inches wide x 30cm/11 inches high and 62cm/24 inches long. Please keep in mind that the baggage compartments on the light aircraft are only 25cm high, so the pilots must have the ability to manipulate the bag into the compartment. Note that laundry can be done on a daily basis at most camps and lodges.

Should you arrive with excess baggage without prior warning, your baggage could be delayed, as we may have to fly the baggage into camp at a later stage at considerable extra cost to you. However, should you notify us in advance that your baggage will exceed the limit; we may be able to assist you with alternative arrangements e.g. storage or purchase of additional luggage allowance.

For bookings including flights within Zambia & Mozambique, please note luggage weight exceptions under destination information.

Lost Luggage

Lost luggage on international flights is a common problem facing travellers today. We suggest that you pack a small bag with your essentials, including any life sustaining medication, which can be carried with you as hand luggage. If travelling as a couple or family we suggest that you split your clothing between bags so that if one bag gets lost, you will have basic items on hand to see you through the first couple of days while we try and recover your lost baggage.

Please note that whilst we try our utmost to locate and re-unite you with your bags, that there may be charges involved in getting your bags to remote areas, which would be for your cost. Please remember to report the lost luggage to the airline as soon as you make the discovery - the airline will issue you with a Baggage Claim Form, which you will need in order for us to trace the bag.

Health and Dietary

Please note that you are travelling to a Malaria-risk area. Please consult your doctor for medical advice prior to travel.

Although usually safe to drink, we do not recommend that you drink the tap water. Filtered water is available at the camps and lodges.

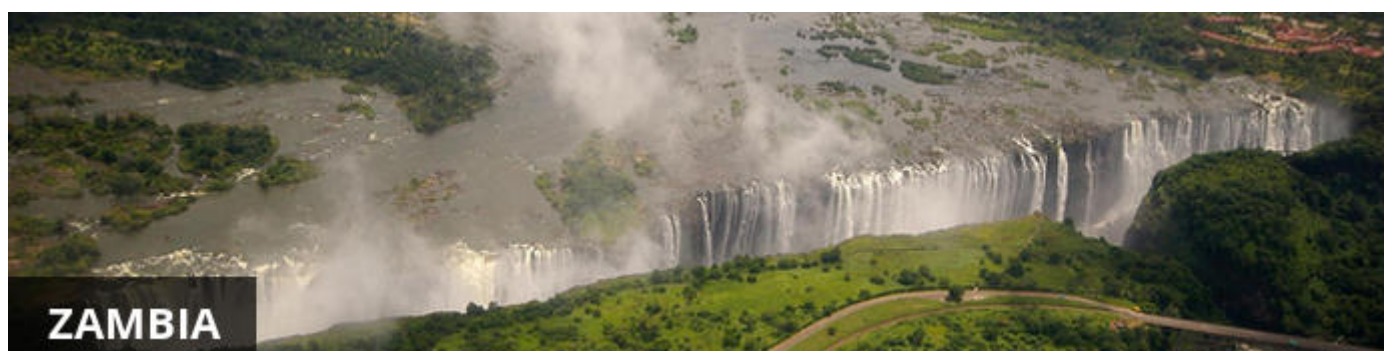
The camps are isolated and generally have limited power supply and access to supplies. Please notify us in advance of any special dietary requirements, medical conditions and medical equipment you may need with you. Please carry critical medication in your hand luggage.

Yellow Fever Certificates - are only required if you have travelled to a Yellow Fever area as designated by the World Health Organisation. Please check with your Travel Clinic or doctor well in advance of your departure date.

General Travel Information

- There is no or limited electricity and cell phone coverage in the camps and lodges excluding major towns and cities. All camps do make provision for charging cameras and electronic devices.
- Please ensure that you do not pack any valuables, cameras, cash, laptops in your checked in luggage – these should be kept on your person at all times.
- Please notify us immediately of any changes to flight arrival and departure details as this affects onward transfer arrangements.
- Please note that most camps & lodges in Botswana do not have double beds. Twin beds are pushed together to make up a double room.
- Although every effort is made to adhere to schedules the company reserves the right and in fact is obliged to occasionally change routes and camps on safaris as dictated by changing conditions or unforeseen circumstances.
- By confirmation of the booking, you acknowledge that you have been made aware and accept that the tour carries inherent risks, and that you voluntarily assume all risks which are associated with the tour. You will be required to sign indemnities at the various camps, lodges and service providers, and abide by their operators code of conduct in order to ensure your safety.
- If you have any cause for complaint while travelling, you should immediately bring it to the attention of the camp manager and / or our Maun office that will attempt to resolve the situation immediately.
- Do not remove any animal artefacts, flora or fauna from any of the areas you visit, as there are strict international regulations on the export of such items.

Please refer to the **Safari Information** for further details on preparing for your safari.



Currency

The official currency in Zambia is the Zambian Kwacha. US\$ Dollar notes (2007 Series onwards), and Visa and MasterCard are accepted.

Visa

Fees for Visitors to Zambia who are eligible to receive their visa on entry US\$ 50.00 for single entry/ US\$ 80.00 for double entry.

Some visitors need to apply for visas before arrival - please check with your Embassy. For more information on visas please visit the following address: [Zambian Visa Requirements](#)

ALWAYS have cash available in the correct US\$ amount at all ports of entry - in the event where credit card facilities/ ATM's are not operational.

Kaza Univisa – Zimbabwe and Zambia

Travellers planning to visit both Zimbabwe and Zambia should apply for a UniVisa (also known as KAZA visa). The visa can be obtained in advance, as well as at ports of entry, but cannot be guaranteed.

The UniVisa allows travellers 30 days travel within both Zambia and Zimbabwe, and is also valid for daytrips to Botswana. Travellers must remain within Zambia & Zimbabwe for the visa to stay valid. Visiting Botswana as a daytrip will not affect the visa's validity, provided travellers return to Zambia or Zimbabwe the same day.

Internal Flights and Transfers

On fly-in safaris, movement between the game areas is done on a scheduled basis by Proflight Zambia unless otherwise specified. Proflight uses 12, 18 and 29 seater aircraft for their flights. Transfers between camps in the same game area may be done by light aircraft, but mostly by road/game drive transfer or by boat on a shared seat basis.

Flight times around Zambia | Approximate Proflight flying times

Livingstone to Lusaka 1 hour

Lusaka to Royal or Jeki Airstrip for Lower Zambezi 35 min

Lusaka to Mfuwe Airport for South Luangwa 1 hour 10 minutes

Mfuwe Airport to Lilongwe Airport 1 hour

All flights Livingstone to Mfuwe/Lower Zambezi are all via Lusaka and vice versa

Departure Taxes

Departure taxes are included in ticket prices.

Weight & Luggage Restrictions

Luggage allowance on Proflight flights is restricted to 23 kg per person travelling on Y- class seats. For any other class or charter flight, the luggage allowance is 15kg per person. Excess baggage will be charged extra for. Any bag over 32kg will not be flown. Only one piece of hand luggage with a maximum weight of 5kg is allowed per person. Please note that a handbag is considered as a piece of hand luggage.



Visa

Some visitors need to apply for visas before arrival please check with your Embassy.

For more information on visas please visit the following address:

[Botswana Government - Visa Requirements](#)

BORDER CROSSINGS

Currency

The currency of Botswana is the Pula (BWP). US\$ Dollar notes (2007 Series onwards), and Visa and MasterCard are accepted.

Internal Flights and Transfers

Due to the remote areas the camps and lodges are based in, transfers between camps may take place by boat, mekoro, game drive vehicle or light aircraft.

Flight times around Botswana | Approximate flying times

Flight duration times (as listed below), are to be used as an average guideline. They are based on actual flying time, and passengers may have various stops en-route to a destination affecting the total travel time. Your pilot will brief you of your flight route and duration during the safety briefing.

Maun - Delta:	15 to 30 minutes
Delta – Delta:	10 to 20 minutes
Delta - Linyanti:	30 to 40 minutes
Maun – Linyanti:	50 to 60 minutes
Linyanti - Kasane:	40 to 60 minutes
Maun/Delta - Kasane:	60 to 80 minutes
Maun - Makgadikgadi/Desert:	40 to 60 minutes

Departure Taxes

Departure taxes are included in ticket prices.

Weight & Luggage Restrictions

See Booking Information
